

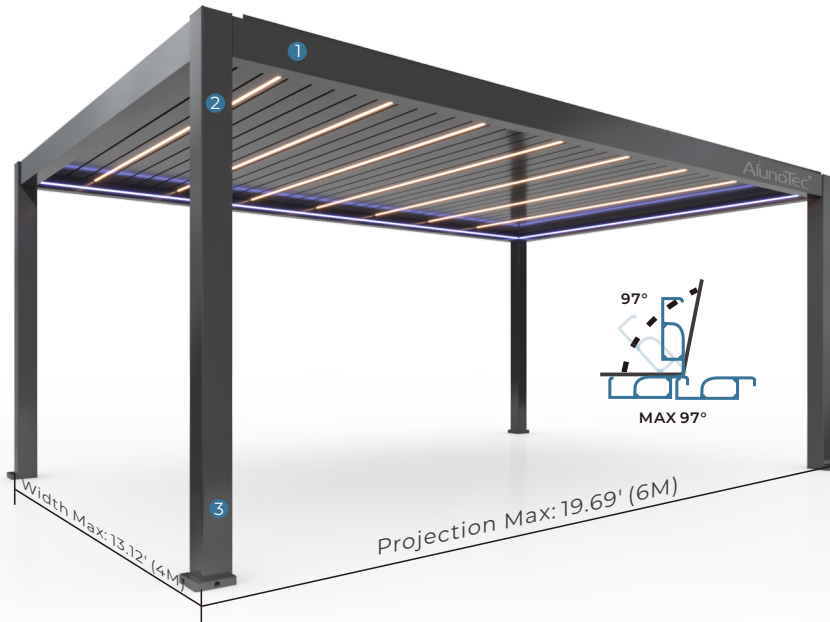
# PERGO-M6 PRO

Experience the Next Level of Innovation



- Integrated Beams & Gutter
- All-in-One Smartphone App
- Brighter Light

## MAIN COMPONENTS



Post	150x150x2.0mm
Beam&Gutter1	190x115x2.2mm
Beam&Gutter2	190x146x2.2mm
Blade	170x45x1.5mm
Base Plate	195X195X8.0MM
Louver Rotating	

### Drainage System



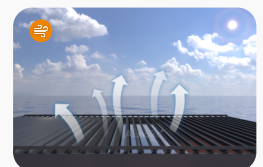
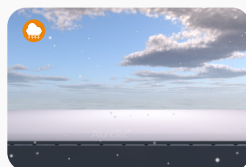
1  
Hidden  
Drainage  
System



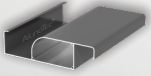
2  
Water  
Being Flowed  
into Post



3  
Drain to  
The Bottom  
of The Post

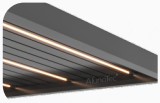


## PRODUCT FEATURES



### Louvre Design

Double-layer rainproof blades, with greater anti-sagging, weatherproofing and better heat insulation.



### LED Lighting

Available in three color temperature options: 3000K, 4000K, and 6000K.



### Quality Motor

Up-to-date waterproof IP67 motor 24V low voltage stable frequency with outdoor safety.



### Special Post

The post has a separate drainage cavity, isolating wires for better safety and hidden cables.



### Fast Assembly

The whole unit can be assembled within 3-6 hours, offering an user-friendly installation experience.





## OPERATION SYSTEM



**All-In-One  
Smartphone App**



**Motorized**



**Manual**



## UPGRADED DETAILS



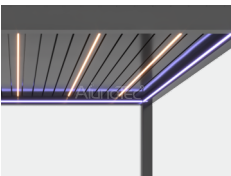
### Integrated Beams & Gutter

The newly upgraded beam gutter integration allows for [quick assembly](#) and [silicone sealant free](#) during installation.



### All-in-One Smartphone APP

The [Tuya APP](#) allows smart operation by controlling not only the louvers but also the lights.



### Brighter Light

The LED strip looks more brighter by [increasing the wattage](#) of the LED strip and [enlarging the groove](#) for the light diffusion.



## BESPOKE DESIGN

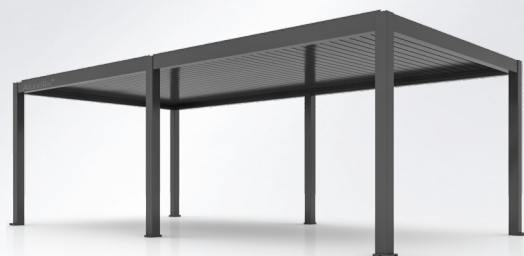
We can customize the size you desire.



■ 13.12'x13.12' (4x4M)



■ 13.12'x19.69' (4x6M)  
(Only 4 Posts)



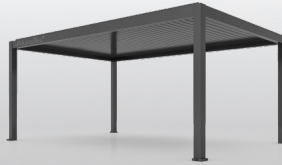
■ 13.12'x26.25' (4x8M)  
(Single Bay)



## COLOR OPTIONS



● RAL9016 **Traffic White**



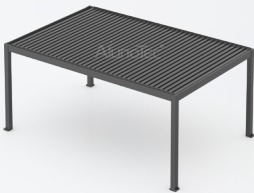
● RAL7016 **Anthracite Grey**



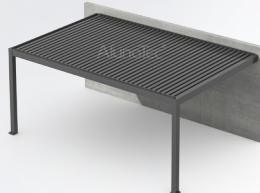
● **Bespoke Color**

## DESIGN OPTIONS

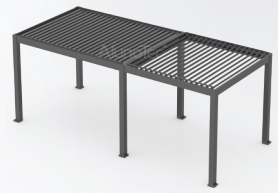
The AlunoTec pergola is a perfect fit for various outdoor living scene.



**Freestanding**



**Semi-attached**

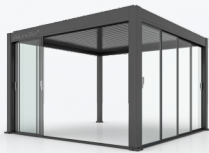


**Extension**

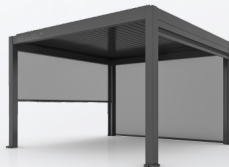


## OPTIONAL ADD-ONS

AlunoTec provide a wide range of add-on products



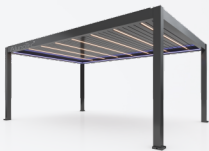
Ultra-slim Framed Sliding Glass Door



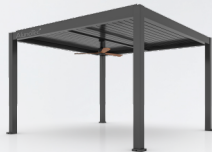
Zipped Blind



Slatted Screen



Linear Strip LED Lights



Ceiling Fan



Electric Heater



Outdoor Furnitures



# CONTACT US

✉ info@alunotec.com

☎ +86-769-88776226

🌐 www.alunotec.com

📍 No. 601, Building B1, Tian'an Digital Town,  
Nancheng District, Dongguan City, Guangdong Province.



**Alunotec**<sup>®</sup>  
Build Your Pergola

Please scan the QR code below if you want to know more



Website



Facebook



YouTube



TikTok



LinkedIn